



CITADEL

COLOR GUIDE

**METAL COMPOSITE
MATERIAL (MCM)**

GLAZING INFILL PANELS

**SINGLE-SKIN TRIM
& FLASHING**



KYNAR 500® – SOLID

				
ARCTIC WHITE	BONE WHITE □	STONE WHITE □	GRANITE	CITYSCAPE □
				
SLATE GRAY □	MUSKET GRAY □	GRAPHITE □	CHARCOAL □ FKA CHARCOAL GRAY	IRON ORE ≡
				
INKWELL ≡	TRADITIONAL BLACK □ REPLACES EBONY	BLACK	ONYX □ FKA MATTE BLACK	ALMOND □
				
SANDSTONE □	SIERRA TAN □	BUCKSKIN ≡	MEDIUM BRONZE □	BURNISHED SLATE □ REPLACES STATUARY BRONZE
				
CLASSIC BRONZE ≡	ANTIQUE BRONZE ≡	AGED BRONZE ≡	DARK BRONZE □	MANSARD BROWN ≡
				
MIDNIGHT BRONZE □ FKA EXTRA DARK BRONZE	TERRA COTTA ≡	COLONIAL RED □	CARDINAL RED ≡ REPLACES REGAL RED	BURGUNDY ≡
				
MILITARY BLUE ≡ FKA SKY BLUE	BERKSHIRE BLUE ≡	PACIFIC BLUE ≡	AWARD BLUE ≡	INTERSTATE BLUE □ REPLACES REGAL BLUE
				
HEMLOCK GREEN	PATINA GREEN ≡	FOREST GREEN ≡ FKA SHERWOOD GREEN	HARTFORD GREEN ≡	

NOTE: FKA = New color is a match to previous color. REPLACES = New color is similar to previous color, but not a match.

□ Available in composite material and 4' wide sheets for flashing application.

➤ Indicates a directional, lot-specific material. When specifying material for a project, panels with these finishes must be installed in all the same direction (180° not acceptable).

≡ Extended Lead Time.



KYNAR 500® – MICA



PLATINUM >



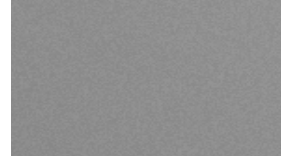
ANODIC CLEAR □ >



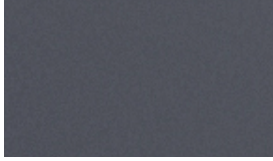
SILVERSMITH > Ⅸ



SILVER □ >
REPLACES SILVER METALLIC



PEWTER >



GUN METAL □ >



WEATHERED ZINC □ >



STONE DRIFT >
FKA CHAMPAGNE METALLIC

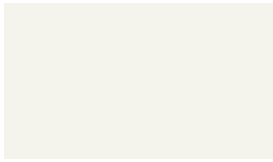


CHAMPAGNE >

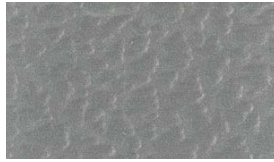


COPPER PENNY >
REPLACES LIQUID COPPER

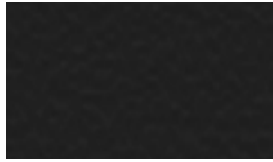
TEXTURED POLYESTER



BONE WHITE
REPLACES SHASTA WHITE



ANODIC CLEAR
REPLACES METALLIC SILVER



TRADITIONAL BLACK
REPLACES EBONY



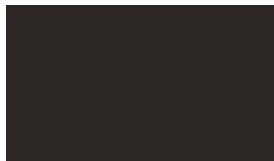
MIDNIGHT BRONZE
FKA CLASSIC BRONZE



SMOOTH POLYESTER



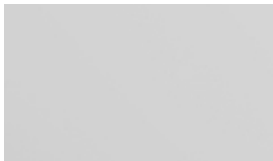
ANODIC CLEAR
REPLACES METALLIC SILVER



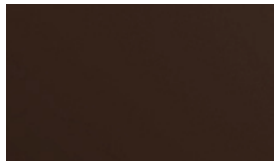
MIDNIGHT BRONZE
FKA CLASSIC BRONZE



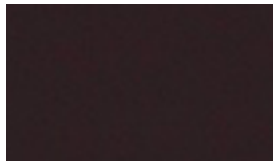
ANODIZED*



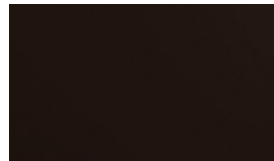
CLEAR ANODIZED □ >



CAST BRONZE ANODIZED □ >
FKA DARK BRONZE ANODIZED



DARK BRONZE ANODIZED □ >
FKA EXTRA DARK BRONZE ANODIZED



BLACK ANODIZED □ >



*Anodized finishes are Exterior Standard No. 1.

NOTE: FKA = New color is a match to previous color. REPLACES = New color is similar to previous color, but not a match.

□ Available in composite material and 4' wide sheets for flashing application.

> Indicates a directional, lot-specific material. When specifying material for a project, panels with these finishes must be installed in all the same direction (180° not acceptable).

Ⅸ Extended Lead Time.

