

GLAZEGUARD®

LIGHTWEIGHT INFILL SOLUTIONS TO MEET YOUR PROJECT NEEDS

Citadel's Glazing Infill Panels are the perfect complement or replacement for glass in storefront, curtain wall, and window applications.

Features & Benefits:

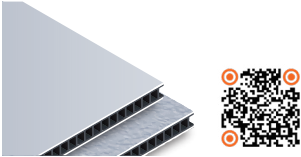
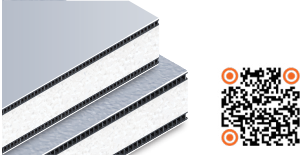
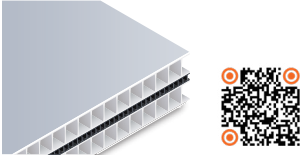
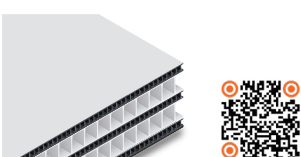
- Third-party tested
- Water and impact resistant options
- Easily cut-to-size in the field (or from the manufacturer)
- Low maintenance
- Quick lead times (2 weeks or less)
- Panel composition warranty (10 years)

Finishes:

Available in a variety of colors and finishes:

- Kynar 500® — long lasting, benchmark for quality
- Anodized — several options to match storefront and curtain wall systems
- Polyester — economical and durable

Visit www.citadelap.com for a full color chart.

PRODUCT	FEATURES	COMPOSITION	THICKNESS	R-VALUE	WEIGHT
GlazeGuard 250 WR 	<ul style="list-style-type: none">▪ Water Resistant▪ ASTM E84▪ ASTM E72	<ul style="list-style-type: none">▪ Textured or Smooth Aluminum Face and Back▪ Polypropylene Core	¼"	1.24	Approx. 0.61 to 1.00 lbs per ft²
GlazeGuard 1000 WR+ 	<ul style="list-style-type: none">▪ Water Resistant▪ Increased Thermal Value▪ ASTM E84▪ ASTM E72	<ul style="list-style-type: none">▪ Textured or Smooth Aluminum Face and Back▪ Polypropylene Stabilizers▪ EPS or ISO Foam Core	1"	<ul style="list-style-type: none">▪ EPS: 4.19▪ ISO: 6.13	Approx. 0.80 to 1.23 lbs per ft²
GlazeGuard 1000 IR 	<ul style="list-style-type: none">▪ Impact Resistant▪ Water Resistant▪ Meets HVHZ Requirements▪ ASTM E84▪ ASTM E72	<ul style="list-style-type: none">▪ Smooth Aluminum Face and Back▪ Polypropylene Stabilizers▪ Polypropylene Core	1"	2.72	Approx. 1.89 lbs per ft²
GlazeGuard 1300 IR* 	<ul style="list-style-type: none">▪ Florida Product Approval for use in Level D, Level E, and HVHZ▪ Small and Large Missile Impact Resistant▪ Fits Standard Curtain Wall Systems▪ ASTM E84▪ ASTM C1363	<ul style="list-style-type: none">▪ Smooth Aluminum Face and Back▪ High Density Polypropylene Stabilizers▪ High Density Polypropylene Cores	1-5/16"	2.2	Approx. 2.35 lbs/ft²

*ASTM 518 has a value of 2.3.

STANDARD SIZES

Widths: 48" or 60"

Length: 96", 120", or 144"

WARRANTY

Textured:

Polyester (5 Year Warranty)

Acrylic Urethane (5 Year Warranty)

Smooth:

Kynar 500 Solid Tones, Mica/Metallic

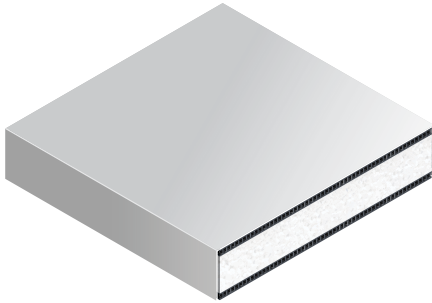
(30 Year Warranty)

Anodized (20 Year Warranty)

Polyester (5 Year Warranty)

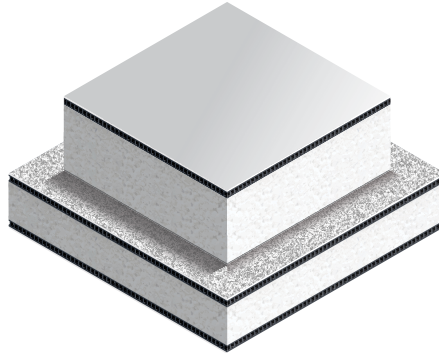
GLAZEGUARD EDGES

GLAZEGUARD WITH WRAPPED EDGES



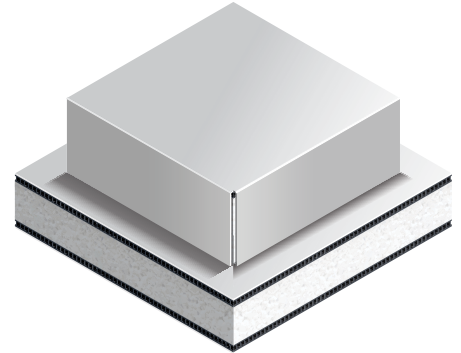
- 1-4 Edges Wrapped Per Project Requirements
- Overall Panel Thickness: Up to 3 ½"
- Smooth Finishes
- Sealed with Silicone Sealant
- Polypropylene Stabilizers
- EPS or ISO Foam Core

GLAZEGUARD WITH OFFSET EDGES

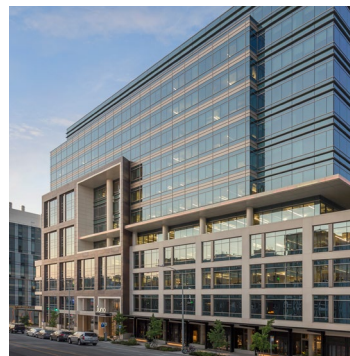
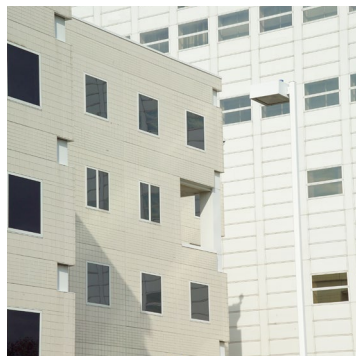


- Offset Available in Various Dimensions
- Overall Panel Thickness: Up to 3 ½"
- Foam Thickness Varies to Meet Size and R-Value Requirements
- Smooth and Textured Finishes
- Polypropylene Stabilizers
- EPS or ISO Foam Core

GLAZEGUARD WITH WRAPPED & OFFSET EDGES



- All Edges Wrapped on Offset Section
- Shipped Separately from Standard Glazing Panel
- Offset Section Adhered in the Field
- Smooth Finishes
- Polypropylene Stabilizers
- EPS or ISO Foam Core



Get more information on all of Citadel's cladding solutions at www.citadelap.com/products.

Citadel Architectural Products

6198 W Airport Blvd
Greenfield, IN 46140
phone (317) 894-9400
www.citadelap.com • info@citadelap.com

AIA
Continuing
Education
Provider



Citadel Architectural Products has implemented a Quality Management System in accordance with ISO 9001:2015.