

A photograph of a modern building with a curved glass facade and dark cladding. The building has multiple levels with large windows and a curved roofline. The sky is overcast. In the foreground, there are some plants and a sidewalk.

COLOR GUIDE

CLADDING SYSTEMS, GLAZING PANELS, AND ACCESSORIES

COLOR CHART

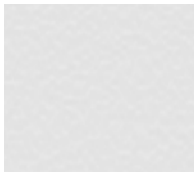


STOCK POLYESTER FINISHES

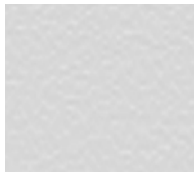
5
YEAR
FINISH
WARRANTY

Durable yet budget-friendly. These finishes offer excellent durability while providing a more economical alternative. Available in a wide range of colors, the textured finishes help conceal any dings or dents and the smooth finishes provide an alternate option for glazing infill.

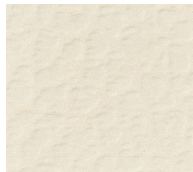
SERIES A: Standard Textured Polyester (.010")



HIGH GLOSS
WHITE



SHASTA
WHITE



IVORY



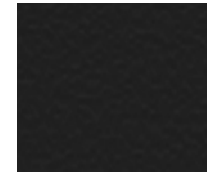
PUEBLO
BEIGE



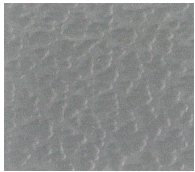
STATUARY
BRONZE



CLASSIC
BRONZE



EBONY



METALLIC
SILVER

SERIES B: Premium Textured Acrylic Urethane (.010")



SILVER
GREY



SLATE
GREY



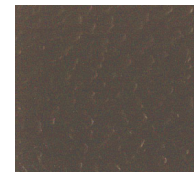
CHARCOAL
GREY



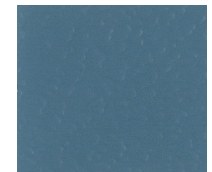
SANDSTONE



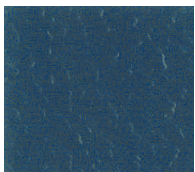
SIERRA
TAN



MEDIUM
BRONZE



SKY
BLUE



REGAL
BLUE



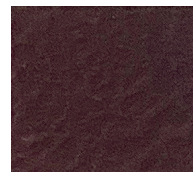
TERRA
COTTA



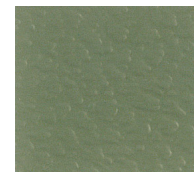
REGAL
RED



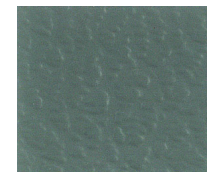
COLONIAL
RED



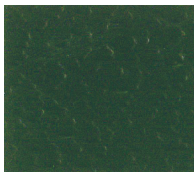
BURGUNDY



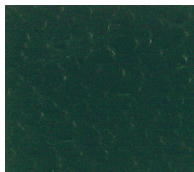
PATINA
GREEN



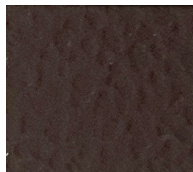
HEMLOCK
GREEN



SHERWOOD
GREEN

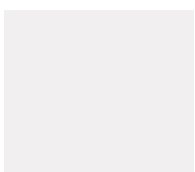


HARTFORD
GREEN

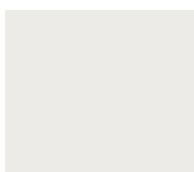


MANSARD
BROWN

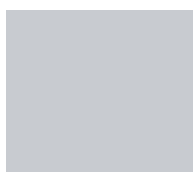
SERIES D: Standard Smooth Polyester (.024")



POLAR WHITE
(48" ONLY)



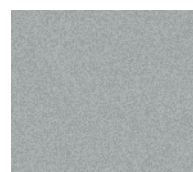
CLASSIC
WHITE



BATTLESHIP GREY
(48" ONLY)



CLASSIC
BRONZE



METALLIC
SILVER

COLOR CHART



STOCK PVDF FINISHES

30
YEAR
FINISH
WARRANTY

Guaranteed performance just got better. As an industry benchmark, Kynar 500® coatings have long been known for quality and durability.

Kynar 500® - Solids

ARCTIC WHITE	RESERVE WHITE	SHASTA WHITE	BONE WHITE	STONE WHITE	SILVER GREY	SLATE GREY
CITYSCAPE	MUSKET GREY	CHARCOAL GREY	GRAPHITE (UMBRA GREY)	EBONY	MATTE BLACK	ALMOND
IVORY	SANDSTONE	PUEBLO BEIGE	SIERRA TAN	MEDIUM BRONZE	STATUARY BRONZE	DARK BRONZE
MANSARD BROWN	EXTRA DARK BRONZE	SKY BLUE	REGAL BLUE	TERRA COTTA	BRITE RED (48" ONLY)	REGAL RED
COLONIAL RED	BURGUNDY	PATINA GREEN	HEMLOCK GREEN	SHERWOOD GREEN	HARTFORD GREEN	

☐ Available in composite material and 4' wide sheets for flashing application (see Quick Reference Guide).

COLOR CHART



STOCK PVDF FINISHES *(continued)*

30
YEAR
FINISH
WARRANTY

The beauty of color, the shine of metal. Mixing mica or metallic flakes within the paint coating allows the base color to offer additional pop, bringing depth to the building elevation. This look is further enhanced by the way in which these flakes reflect the light from different viewpoints.

Kynar 500 - Micas



SILVER
METALLIC



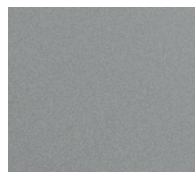
PLATINUM



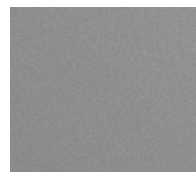
MOONRISE
METALLIC



ANODIC
CLEAR



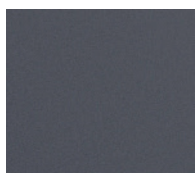
NORTH SEA
MIST



PEWTER



WEATHERED
ZINC



GUN METAL



LIQUID
COPPER



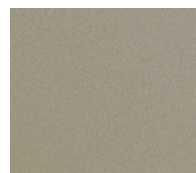
ATLANTIC
SUNRISE



CHAMPAGNE
METALLIC



CHAMPAGNE
BRONZE



DESERT
SAND

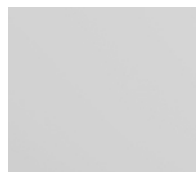


STOCK ANODIZED FINISHES

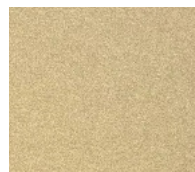
20
YEAR
FINISH
WARRANTY

Anodized aluminum. These finishes are chemically and electrically produced (not just an anodic-look paint), and offer an excellent complement to storefront and glazing system extrusions.

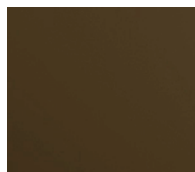
Anodized



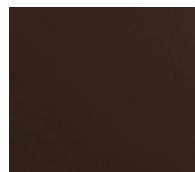
CLEAR
ANODIZED



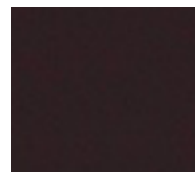
CHAMPAGNE
ANODIZED



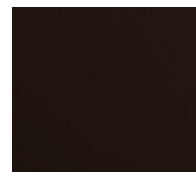
MEDIUM BRONZE
ANODIZED



DARK BRONZE
ANODIZED



EXTRA DARK
BRONZE ANODIZED

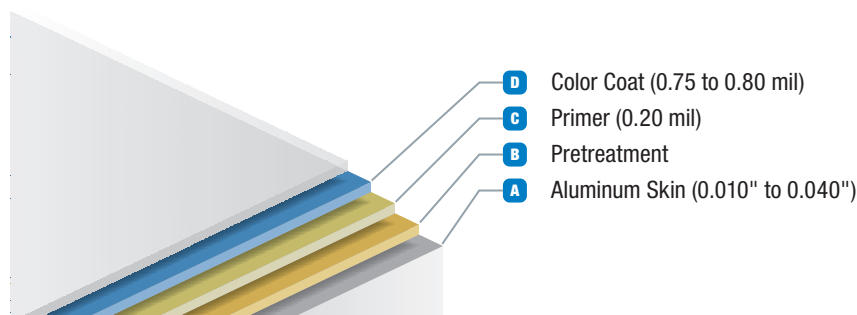


BLACK
ANODIZED



Anodized finishes are Exterior Standard No. 1

COLOR CHART



AVAILABILITY BY PRODUCT

Panel 15®	SinoCore®	ProCore™	Panel 20®	Envelope 2000® RV / DRV	Envelope 2000 RR / RS	GiazeGuard®

CATEGORY	TYPE	COMPOSITION	FEATURES & BENEFITS	DESCRIPTION
				• • • • • • •
SERIES A, D	1-Coat ¹ Textured (.010")/ Smooth (.024") Polyester	D - Color Coat B - Pretreatment A - Aluminum Skin	<ul style="list-style-type: none"> • Economical choice for coatings • Durable, hard surface • Available in a wide range of colors 	Thermosetting paint system applied with similar techniques to PVDF (based on volume).
				• • • • • • •
SERIES B	1-Coat Textured Acrylic Urethane (.010")	D - Color Coat C - Primer B - Pretreatment A - Aluminum Skin	<ul style="list-style-type: none"> • Used for premium/custom colors • Similar in performance to polyester • Good gloss retention and weatherability 	Two-component cross-linked system applied with electrostatic or conventional spray equipment.
				• • • • • • •
KYNAR 500 - SOLIDS	2-Coat Smooth PVDF	D - Color Coat C - Primer B - Pretreatment A - Aluminum Skin	<ul style="list-style-type: none"> • Industry benchmark for quality • Unsurpassed color retention, chemical resistance and film erosion resistance 	Heat-set coating using 70% Kynar 500 or Hylar 5000® resins.
				• • • • • • •
KYNAR 500 - MICAS	2-Coat Smooth PVDF	D - Color coat C - Primer B - Pretreatment A - Aluminum skin	<ul style="list-style-type: none"> • Metallic look with mica flake • Performance same as standard 2-coat smooth PVDF 	Heat-set coating using 70% Kynar 500 or Hylar 5000 resins with mica flakes.
				• • • • • • •
ANODIZED	Integral Anodized	<ul style="list-style-type: none"> • Nickel/Hydrate Seal • Colorant² • Aluminum Oxide • Barrier • Aluminum Skin 	<ul style="list-style-type: none"> • Not an anodic look or paint, but a true integral anodized aluminum to match storefront and window extrusions 	Transparent or colored oxidized finish integral to the base aluminum induced with electricity and chemicals.

¹ - Primer is present on Polar White and Battleship Grey.
² - Clear Anodized does not use a colorant.

QUICK REFERENCE GUIDE



	COMPOSITE PANEL FINISHES	METAL FOR TRIM, FLASHING & ACCESSORIES			
	.024	.040	.050	.063	24 GA STEEL
KYNAR 500 - SOLIDS					
Almond	•	•	•		•
Arctic White	•	•			
Bone White	•	•	•	•	•
Burgundy	•				
Brite Red	•				
Charcoal Grey	•	•			•
Cityscape	•	•	•		•
Colonial Red	•	•			•
Dark Bronze	•	•	•	•	•
Ebony	•	•			
Extra Dark Bronze	•	•			
Graphite (Umbra Grey)	•	•			
Hartford Green	•				
Hemlock Green	•				
Ivory	•				
Mansard Brown	•				
Matte Black	•	•	•		•
Medium Bronze	•	•	•	•	•
Musket Grey	•	•			•
Patina Green	•				
Pueblo Beige	•				
Regal Blue	•				
Regal Red	•				
Reserve White	•				
Sandstone	•	•	•	•	•
Shasta White	•				
Sherwood Green	•				
Silver Grey	•				
Sky Blue	•				

	COMPOSITE PANEL FINISHES	METAL FOR TRIM, FLASHING & ACCESSORIES			
	.024	.040	.050	.063	24 GA STEEL
KYNAR 500 - SOLIDS					
Slate Grey	•	•	•		•
Sierra Tan	•	•	•		•
Statuary Bronze	•				
Stone White	•	•	•	•	•
Terra Cotta	•				
KYNAR 500 - MICAS					
Anodic Clear	•	•			
Atlantic Sunrise	•				
Champagne Bronze	•				
Champagne Metallic	•	•			
Desert Sand	•	•			
Gun Metal	•	•	•		
Liquid Copper	•				
Moonrise Metallic	•			•	•
North Sea Mist	•				
Pewter	•				
Platinum	•				
Silver Metallic	•	•			
Weathered Zinc	•	N/A	•	N/A	•
ANODIZED					
Black Anodized	•	•	N/A		
Champagne Anodized	•		N/A		
Clear Anodized	•	•	•	•	
Dark Bronze Anodized	•	•	N/A		
Extra Dark Bronze Anodized	•	•	N/A		
Medium Bronze Anodized	•		N/A		

Citadel Architectural Products

6198 W Airport Blvd
Greenfield, IN 46140
(800) 446-8828

www.citadelap.com • info@citadelap.com

AIA
Continuing
Education
Provider



MADE IN THE U.S.A.

Citadel Architectural Products has implemented a Quality Management System in accordance with ISO 9001:2015.

©2025 Citadel Architectural Products. All Rights Reserved.
SinoCore® Panel 20® Envelope 2000® and GlazeGuard® is a registered trademark of Citadel Architectural Products.
ProCore™ is a trademark of Citadel Architectural Products.
Kynar 500® is a registered trademark of Arkema, Inc.
Printed In The U.S.A. 4/25