

# Installation Guidelines

⚠ — **WARNING: FAILURE TO FOLLOW THESE GUIDELINES WILL VOID THE STANDARD WARRANTY.** — ⚠

**BE SURE TO READ, UNDERSTAND AND FOLLOW ALL GUIDELINES.** Manufacturer guidelines may vary depending upon specific application and project conditions. The manufacturer should be contacted with questions regarding conditions which vary from the guidelines set forth. Standard carpentry knowledge is required and good construction practice for health, safety and welfare must be followed when installing GlazeGuard®.

## PRE-INSTALLATION: MATERIAL RECEIVING & INVENTORY

### VISUAL INSPECTION:

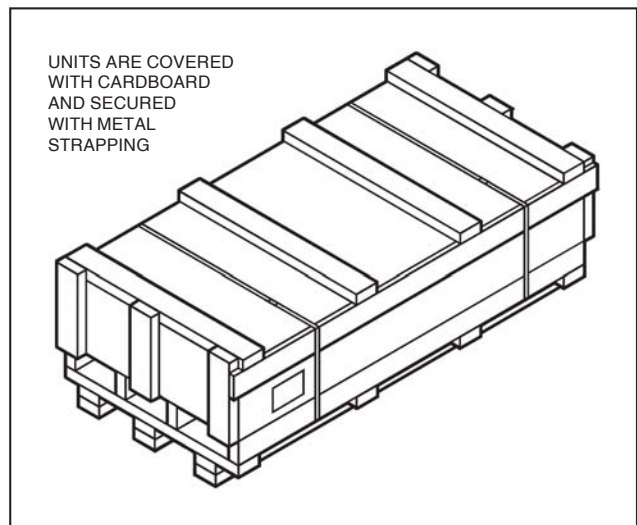
Upon material arrival, all panel units should be visually inspected to verify that the product is in good condition and free from shipping damage, weather damage or defects.

- IS THE PRODUCT IN GOOD CONDITION?**
- IS THE PRODUCT FREE FROM DEFECTS?**
- IS THE PRODUCT CLEAN AND DRY?**

**NOTE:**

**Notify the distributor from which the product was purchased of any missing or incomplete shipments IMMEDIATELY. Failure to do so may result in forfeit of corrective action.**

**FIGURE A.**



**NOTE:**

- Shipping damage and/or packaging issues should be first noted on the bill of lading and then reported to the distributor.
- Should damage occur, the customer is responsible for filing a freight claim with the shipping company **WITHIN 24 HOURS** from material receipt. Failure to do so may possibly result in forfeit of corrective action.
- Any defective material should be reported directly to the distributor from which the product was purchased.

## PRE-INSTALLATION: TRANSPORTING & HANDLING

### TRANSPORTING THE MATERIAL:

GlazeGuard® is packaged from the manufacturer in quantities of 40 pieces (or less) per unit (only 20 pieces per unit for GlazeGuard® 1000), under cover and secured with metal strapping (**FIG. A**). If possible, panels should remain in this original packing for transport.

If a forklift or pallet jack is unavailable, panel unit may be broken and carried to storage by hand according to the following guidelines.

### HANDLING THE MATERIAL:

A strippable protective film (or interleafed foam) is standard on all panels. This film should remain on the product until instructed to take it off (during installation

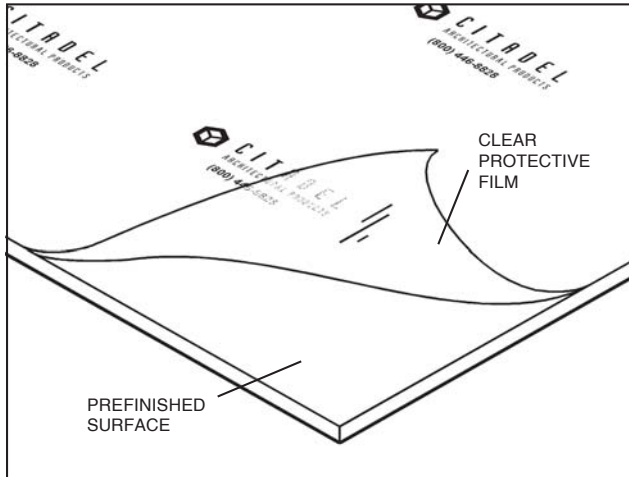
### MATERIAL INVENTORY:

After verifying the condition of the product, inventory units against the packing slip to make sure that all material is received.

- ARE ALL OF THE PANEL UNITS PRESENT?**
- IS THE PIECE PER UNIT COUNT CORRECT?**

procedure). This strippable film (**FIG. B**) is designed to prevent minor abrasions to the surface. However, panels should still be handled with care to avoid any major dings, dents or scratches.

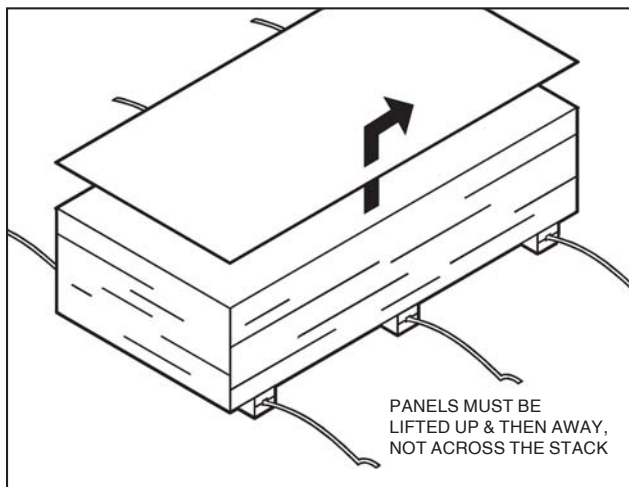
**FIGURE B.**



**NOTE:**

- When handling panels, clean work gloves should be worn at all times to protect from sharp edges and to prevent any smudging of the painted finish.
- When removing material from shipping units, DO NOT drag/slide panels across stack underneath. Panels must be lifted up, then away to avoid any permanent damage to the painted surface (FIG. C).

**FIGURE C.**



**PRE-INSTALLATION:  
STORING THE MATERIAL UNITS**

**MATERIAL STORAGE:**

If the units have been broken, material should be restacked, on a skid. Painted surfaces (strippable film side) should be placed face to face and any interleaved foam must be repositioned.

**NOTE:**

**Failure to properly protect material from moisture intrusion may cause damage to the panel surface and/or core. Such damage is NOT covered under the standard warranty.**

If the material has become damp or wet during transportation, the surface should be wiped dry before stacking to prevent any type of corrosion. Once the stacking is completed (or if the original packaging is still intact), the units must be covered with a waterproof covering.

All units must be kept in a dry, well-ventilated area away from exposure to the elements and/or any other construction installations which may cause damage to the product.

**GENERAL WORK:  
LIMITATIONS OF THE PANEL SYSTEM**

**USES & APPLICATIONS:**

GlazeGuard® is intended for use as a replacement or complement to glass in new or retrofit construction. The panels are designed to be installed in glazing channels or other similar type channels where all four edges are sealed.

**NOTE:**

**These panels are not eligible for use as a wall cladding system. No trim moldings, fasteners or accessories are available with GlazeGuard®.**

**GENERAL WORK:  
FABRICATION OF THE PANELS**

**SAFETY PRECAUTIONS:**

When performing fabricating procedures, it is necessary to observe all general guidelines for safety. Cutting, drilling, or otherwise machining the panels and trim moldings may produce flying chips, shavings, or dust.

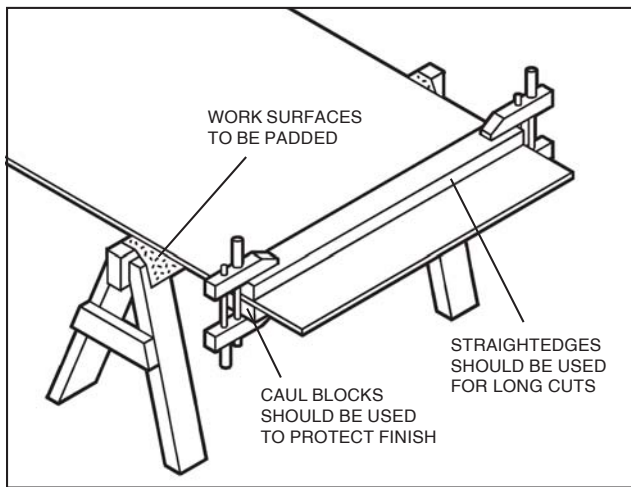
**NOTE:**

**In addition to work gloves and proper clothing, safety goggles, ear protection, and possibly dust masks may be needed when fabricating system components.**

**CUTTING & DRILLING OF PANELS:**

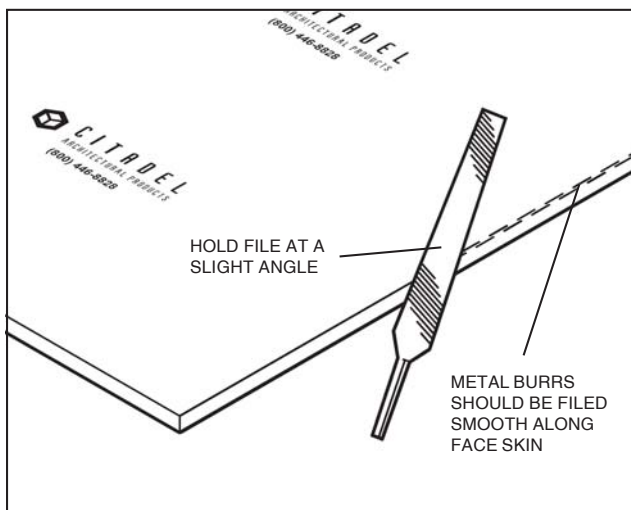
Cut-to-size panels are available from the manufacturer. When field cutting is required, it may be performed using standard carpentry tools equipped with carbide-tipped blades. Work surfaces should be padded (**FIG. D**) and free from any debris which may damage the finish. For cleaner cuts, backer blocks and straightedges may be

**FIGURE D.**



clamped to the panel surface. Caul blocks should be used when necessary to protect the painted finish. After cutting, aluminum edges may need filing to remove sharp projections and/or metal burrs (**FIG. E**) that might prevent the panel from sliding into the channel properly. Doing so will also reduce the risk of personal injury.

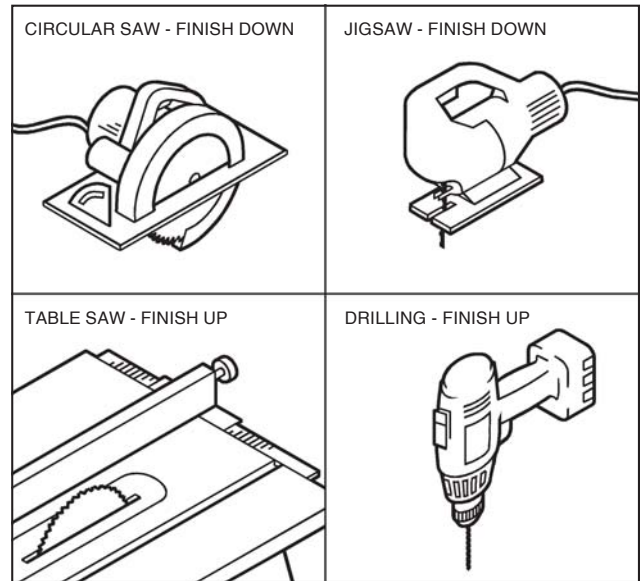
**FIGURE E.**



When using a table saw to cut panels, the finished side (protective film) should be placed facing upward. For hand held circular saws and jigsaws, the finish side should be facing down (**FIG. F**). If working with custom color panels and a protective film is not present, the interleaved foam should be placed in a position to protect the painted finish.

For drilling operations, the finished side should be placed facing upward and a backer block should be used when necessary to minimize any tearout.

**FIGURE F.**



**GENERAL WORK:  
INSTALLING THE PANELS**

**WORK SEQUENCE:**

GlazeGuard® panels should be cut-to-size for proper installation. A standard 1/4" space should be allowed around the perimeter of the glazing channel.

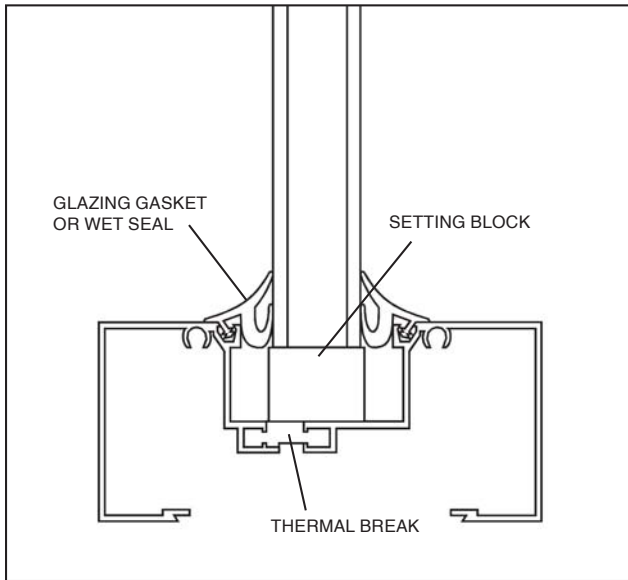
Before placing the panel into the channel, peel the protective film away from the edges (approx. 4"-6").

To prevent moisture intrusion, panels should be set on 2" (approx.) long setting blocks (**FIG. G**). These blocks should be set at quarter points at the bottom of the panel (appropriate block width determined by panel thickness). Installing GlazeGuard® panels framing systems with weep holes are preferred, as they aid in dispersing any incidental moisture.

Verify glazing channel has depth capacity to accommodate the 1/4" spacing needed around the perimeter of the panel while allowing for a standard 1/2" edge grip.

To complete installation, seal perimeter joint with an acceptable wet seal compound or water tight gasket and completely remove the protective film.

**FIGURE G.**



**GENERAL WORK:  
THE PROTECTIVE FILM**

GlazeGuard® panels have a protective film (or interleaved foam) on all painted finishes. During installation, the protective film is to be removed completely. For ease of removal, pull the film back against itself in the same plane as the panel.

<b>NOTE:</b>
<p>Failure to remove the protective film promptly after installation (or exposure to long periods of sunlight) may cause difficulties in removal and possibly leave an adhesive residue.</p>

**MAINTENANCE OF THE  
PANEL FINISH**

**REPAIR/TOUCH UP:**

Any minor scratches or dings which may occur during installation can be repaired using touch-up paint available from the manufacturer. Repainting of large areas with the touch-up paint is not recommended. Finish characteristics of the repainted surface may vary from the prepainted aluminum.

**MAINTENANCE:**

Panels should be incorporated into an overall building washing/maintenance schedule and cleaned in accordance with AAMA 610.1, Voluntary Guide Specification for Cleaning and Maintenance of Painted Aluminum Extrusions and Curtain Wall Panels.

In general, panels may be cleaned using warm water and a mild detergent (if necessary). For more aggressive materials, a gentle brushing/scrubbing action may be required. Abrasive detergents and/or harsh solvents should not be used.